






MFFIRE

NOVA SERIES™

VERSATILE | EFFICIENT | MODERN



-  **Simple to Use**
-  **EPA Compliant**
-  **Large Fire Viewing Area**
-  **Modern Design**



www.mffire.com

CHANGING THE GAME

We call it **Nova Series**

You can call it the **Problem Solver**



INSTALLATION VERSATILITY

Our Nova Series is the only steel wood stove on the market that is top and rear vent compatible. With the addition of a six-inch leg kit and an ash lip, they meet the requirements for Type 1 flooring. Also, the Nova Series accommodates a range of flue heights, ensuring unrivaled installation flexibility.

FOCUS ON THE FIRE

With up to 245 in² glass viewing area, the beauty and warmth that wood fire brings is present at all times. Leveraging our innovative angled baffle design, the flames are directed forward and pushed into the room. Both of these features allow you to enjoy the large and cozy flames.

PERFORMANCE



Nova Series is the market leader in versatile, simple, and beautiful wood stoves. The Nova Series firebox is a clean burning, efficient wood stove with a modern aesthetic and easy-to-use operation demanded by present-day wood stove users.



SIMPLE TO USE

Nova is the easiest wood stove you will ever use. It is designed to take the guesswork out of wood burning. Perfect for both the casual and lifelong burner, there is no longer the need to adjust burn settings like other wood stoves. Just light a fire and an efficient, clean burn is delivered every time.

NOVA



Max. Heat Output: 50,000 BTU/hr
Max. Efficiency: 79%
Firebox: 1.7 ft³
Viewing Glass: 12.25" x 14.25"
Log Size: 18"
Top & Rear Vent Compatible

NOVA 2



Max. Heat Output: 75,000 BTU/hr
Max. Efficiency: 81%
Firebox: 2.4 ft³
Viewing Glass: 13.75" x 17.75"
Log Size: 22"
Top & Rear Vent Compatible

VERSATILITY MENU

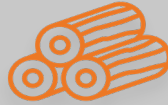
STEP 1: CHOOSE YOUR FIREBOX

NOVA



18" Logs

- Heating Capacity: 1,500 sq²
- Firebox: 1.7 ft³ | 315 lbs
- Dimensions: 24"H x 22.5"W x 18.5"D



22" Logs

- Heating Capacity: 2,500 sq²
- Firebox: 2.4 ft³ | 405 lbs
- Dimensions: 26.5"H x 27"W x 18.5"D



NOVA 2

STEP 2: CHOOSE YOUR DOOR



CHARCOAL



BLACK



STAINLESS

STEP 3: CHOOSE YOUR SETTING



TOWER



FREESTANDING



BENCH



INSERT

STEP 4: CHOOSE YOUR ACCESSORIES

Leg Kit - 3", 6", 9"

6" Legs for Tower model

Blower

Included w/ Insert

Ash Lip

Reduced Clearance Kit

Make-Up Air Kit

Ash Pan



ASH LIP



TOWER LEG KIT